



LIANZA

PEOPLE & COMMUNITIES CONNECTED & EMPOWERED BY INFORMATION

LIANZA ORGANISATIONAL CHANGES

A summary of the governance, advisory and operational changes proposed by the review of LIANZA's strategic leadership governance and organisational structure

GOVERNANCE

LIANZA has a set of rules, also known as a constitution, and a code of practice.

The proposed governance changes would become part of the constitution and require member approval at the annual general meeting.

GOVERNANCE	Current	Proposed	Purpose
	LIANZA OFFICERS: Elected nationally President-elect President Immediate Past President (ex-officio) Appointed by council Treasurer Appointed by Te Rōpū Whakahau Te Rōpū Whakahau Tumuaki	LIANZA OFFICERS: Elected nationally President-elect President Immediate Past President Appointed by council Treasurer	LIANZA and Te Rōpū Whakahau build a stronger strategic partnership and this intent is made explicit in the new rules LIANZA Council and Te Rōpū Whakahau Nga Kaiwhakahau engage strategically at annual hui Elevates council focus towards advocacy and providing strategic leadership to the profession
	LIANZA EXECUTIVE: President-elect President Immediate Past President Treasurer Executive Director	LIANZA EXECUTIVE: President-elect President Immediate Past President Treasurer Executive Director	
	LIANZA COUNCILLORS: Elected regionally Six regional councillors Appointed by Te Rōpū Whakahau Te Rōpū Whakahau councillor	LIANZA COUNCILLORS: Elected nationally Four councillors elected by the membership Appointed by council Two councillors; including one appointed with skills in Tikanga and Mātauranga Māori knowledge and one councillor that may be appointed from beyond the library and information sector	Elected and appointed council members sought by skills, knowledge, experience and networks e.g. strategic, sector, specialist Annual council audit to identify strategic skills and sector knowledge required on council to deliver strategic plan Appointed councillors bring increase in perspectives and networks
	COUNCIL SECRETARY: LIANZA Executive Director (non-voting)	COUNCIL SECRETARY: LIANZA Executive Director (non-voting)	
	TERM: Three-year term for president Two-year-term for other council members, no limit on number of terms	TERM: Three-year-term for all council members with a limit of two terms served consecutively	Increased length of term allows for greater continuity and reduces the likelihood of loss of knowledge Limit on number of consecutive terms ensures new perspectives
	SIZE: 12 council members + council secretary	SIZE: 10 council members + council secretary	
	QUORUM: Seven with President or President-elect and one representative of Te Rōpū Whakahau	QUORUM: Six members with President or President-elect	

ADVISORY

Proposed advisory changes can be included in the LIANZA Code of Practice and do not require member approval.

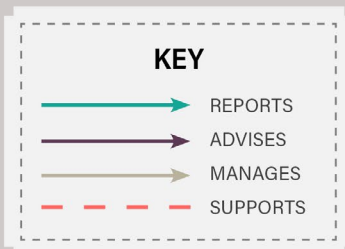
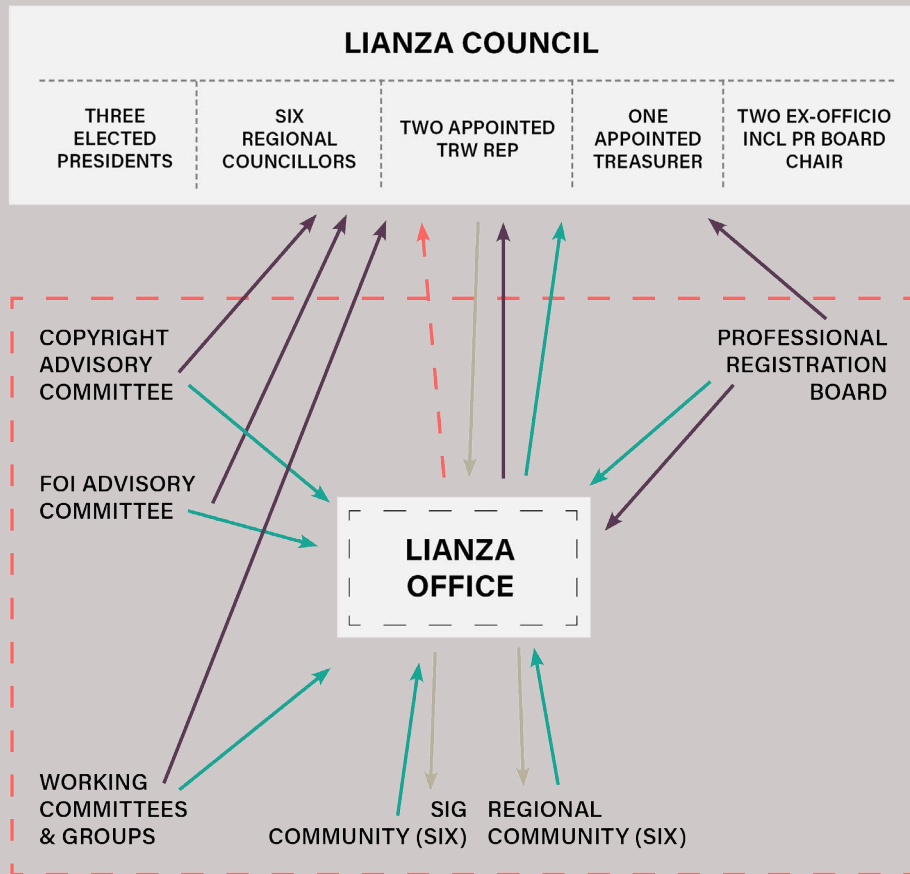
ADVISORY	Current	Proposed	Purpose
	<p>Current committees include LIANZA Standing Committee on Copyright and LIANZA Standing Committee on Freedom of Information</p>	<p>Additional 'expert advisory groups' or EAGs formed to provide sector and specialist advice, develop position statements and work to achieve strategic goals</p> <p>Annual forum of LIANZA council, advisory groups, committees, regional and special interest communities to engage cross-sector views from, share information, agree the big strategic issues and develop a 'whole' association view</p>	<p>LIANZA Council receives expert advice and support for more effective sector advocacy</p> <p>Relationship and reporting between EAGs and LIANZA Council is clarified and strengthened</p> <p>LIANZA Council provides clear direction to EAGS regarding strategic direction of association.</p> <p>Enables more sector input to LIANZA and strengthens sector collaboration</p> <p>Enables LIANZA to provide effective sector advice to National Library of NZ, Archives NZ, key stakeholders and government</p> <p>Creates opportunities for one sector-wide voice on issues impacting the sector</p> <p>Expert advisory groups ensure that LIANZA Council can identify key issues and will provide expert advice to develop policy and advocacy plans</p> <p>Provides more resources to 'get the work done'</p> <p>Provides more opportunities for LIS professionals to become involved in issues that matter to them</p>

OPERATIONAL

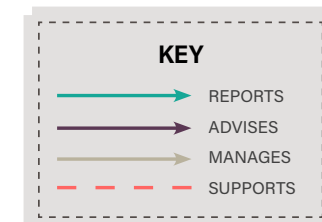
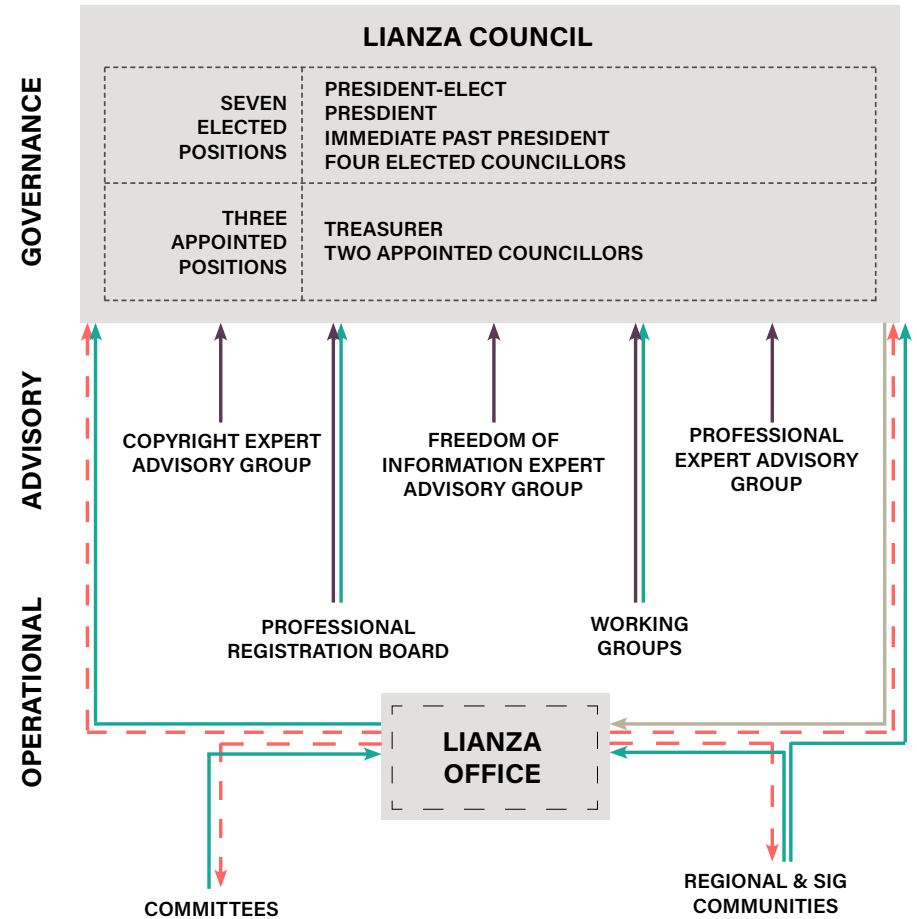
Proposed operational changes include strengthening of the advisory role of LIANZA special and regional communities. These changes can also be included in the LIANZA Code of Practice and do not require member approval.

OPERATIONAL	Current	Proposed	Purpose
LIANZA REGIONAL COMMUNITIES	Six LIANZA regional communities	<p>Six LIANZA regional communities continue to provide member engagement and professional opportunities</p> <p>Regional communities play greater role in providing advice to LIANZA Council</p> <p>Regional community chairs or reps attend LIANZA forums</p>	<p>Recognises essential role of regional communities to build member engagement</p> <p>Strengthens advisory role of LIANZA regional communities</p> <p>Provides opportunities for members to develop skills and make professional connections</p> <p>Regions are engaged differently in the proposed structure with increased advisory and strategic role</p> <p>Provides LIANZA Council with greater range of advice</p>
LIANZA SPECIAL INTEREST COMMUNITIES	Special interest communities can be proposed by members at any time	<p>Special interest communities continue to provide member engagement and professional opportunities</p> <p>Special interest communities play greater role in providing advice to LIANZA Council</p> <p>Special interest communities can continue to be created by members</p> <p>Special interest community chairs or reps attend LIANZA forums</p>	<p>Recognises essential role of special interest communities to build member engagement</p> <p>Strengthens advisory role of LIANZA special interest communities</p> <p>Provides opportunities for members to develop skills and make professional connections</p> <p>Special interest groups also have increased advisory and strategic role</p> <p>Provides LIANZA Council with greater range of advice</p>
LIANZA PROFESSIONAL REGISTRATION BOARD	<p>LIANZA PR Board operates the professional registration scheme and provides advice to council</p> <p>PR Board chair attends LIANZA council meetings</p>	<p>LIANZA PR Board responsible for development of position statement, annual work plan and reporting to LIANZA Council</p> <p>PR Board chair no longer attends LIANZA council meetings but provides written reports and attends LIANZA forums</p>	Strengthen the role of PR Board to provide strategic advice LIANZA Council
LIANZA COMMITTEES	LIANZA Credentials Committee advises LIANZA Council on professional awards	Committees formed as required	
LIANZA WORKING GROUPS	Working groups can be created to undertake specific work for LIANZA	All working groups have clear terms of reference include requirement for members to be personal members or staff at member institutions	Expectations and scope of work are clearly defined

CURRENT STRUCTURE



PROPOSED STRUCTURE



TRANSITION PLAN

	EXECUTIVE three presidents + treasurer		Regional councillors		Te Rōpū Whakahau	SIX COUNCILLOR MODEL four elected and two appointed						Votes for each member pa*
	President elect	Treasurer	Regional councillors	Regional councillors		Elected councillor 1	Elected councillor 2	Appointed councillor 1	Elected councillor 3	Elected councillor 4	Appointed councillor 2	
2019-20	1											
2020-21	1		Te Whakakitenga aa Kaimai Ikaroa Murihiku									1
2021-22	1	A										
2022-23	1		<i>Regional councillor position ceases</i>	Hikuwai Te Upoko o te Ika a Maui Aoraki	<i>Te Rōpū Whakahau tumuaki and councillor position on LIANZA Council cease</i>	Elected councillor 1	Elected councillor 2	Appointed councillor 1				3
2023-24	1	A	<i>Regional councillor position ceases</i>						Elected councillor 3	Elected councillor 4	Appointed councillor 2	
2024-25	1											1
2025-26	1					Elected councillor 1	Elected councillor 2	Appointed councillor 1				3
2026-27	1	A							Elected councillor 3	Elected councillor 4	Appointed councillor 2	3
2027-28	1											1
2028-29	1					Elected councillor 1	Elected councillor 2	Appointed councillor 1				3
2029-20	1	A							Elected councillor 3	Elected councillor 4	Appointed councillor 2	3
2030-31	1											1
2031-32	1					Elected councillor 1	Elected councillor 2	Appointed councillor 1				3
2032-33	1	A							Elected councillor 3	Elected councillor 4	Appointed councillor 2	3
2033-34	1											1
2034-35	1											3

*an example based on a member in Aoraki region